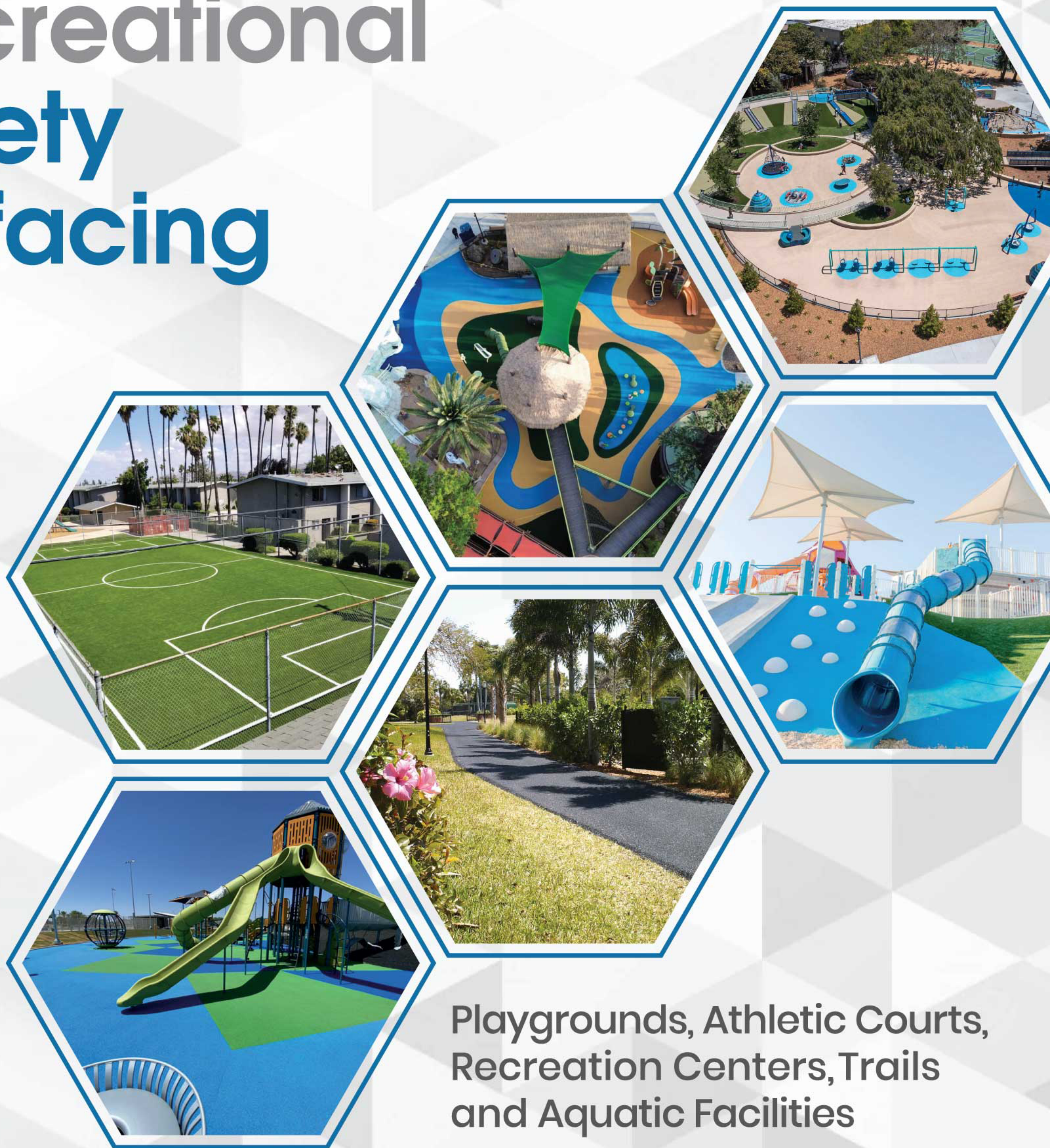




# Recreational Safety Surfacing



Playgrounds, Athletic Courts,  
Recreation Centers, Trails  
and Aquatic Facilities

888.571.1080

[www.flexground.com](http://www.flexground.com)



# FlexGround: Mission Statement

To provide innovative and high quality surfacing options, installed by a

Gilbert Regional Park,  
Gilbert, Arizona





knowledgeable and caring staff, backed by unparalleled customer service.



**Table of Contents**

Playground Surfacing .....	3
Recreational Surfacing .....	9
Aquatic Surfacing .....	12
Surface Repair & Maintenance .....	15
Who is FlexGround .....	17



# Playground Surfacing

## FlexGround UltraFlex-TPV

### Our Highest Quality Poured-In-Place Product:

UltraFlex is the highest quality, longest lasting rubber safety surfacing on the market. It is a poured-in-place two-layer system that uses a small granule (0.5-1.5mm) TPV for the top surface wear course. Elevated urethane ratios bind the smaller granules together for a superior product.

- Dual layer system of cushion & colored layer
- Mixed and applied on site
- Features aliphatic urethane binder for higher UV resistance
- More durability
- ASTM compliant for fall & accessibility
- IPEMA certified

### Premium Colors

A wider rainbow array of colors is available upon request & may require a premium up-charge. Please check with a representative for availability in your area. Colors are representative of actual rubber. Note that colors may appear slightly different in print. For actual color review, please request samples.





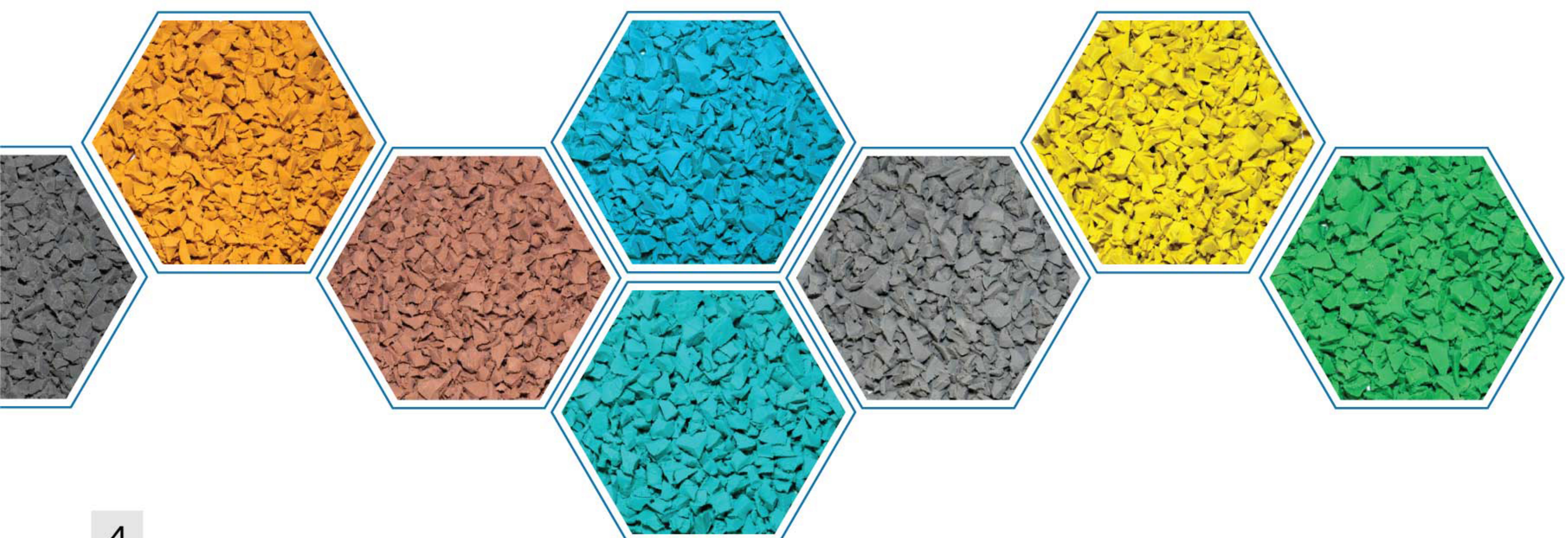
## FlexGround EnduraFlex-TPV

### Highest Quality Thermo Plastic Vulcanized Rubber (TPV)

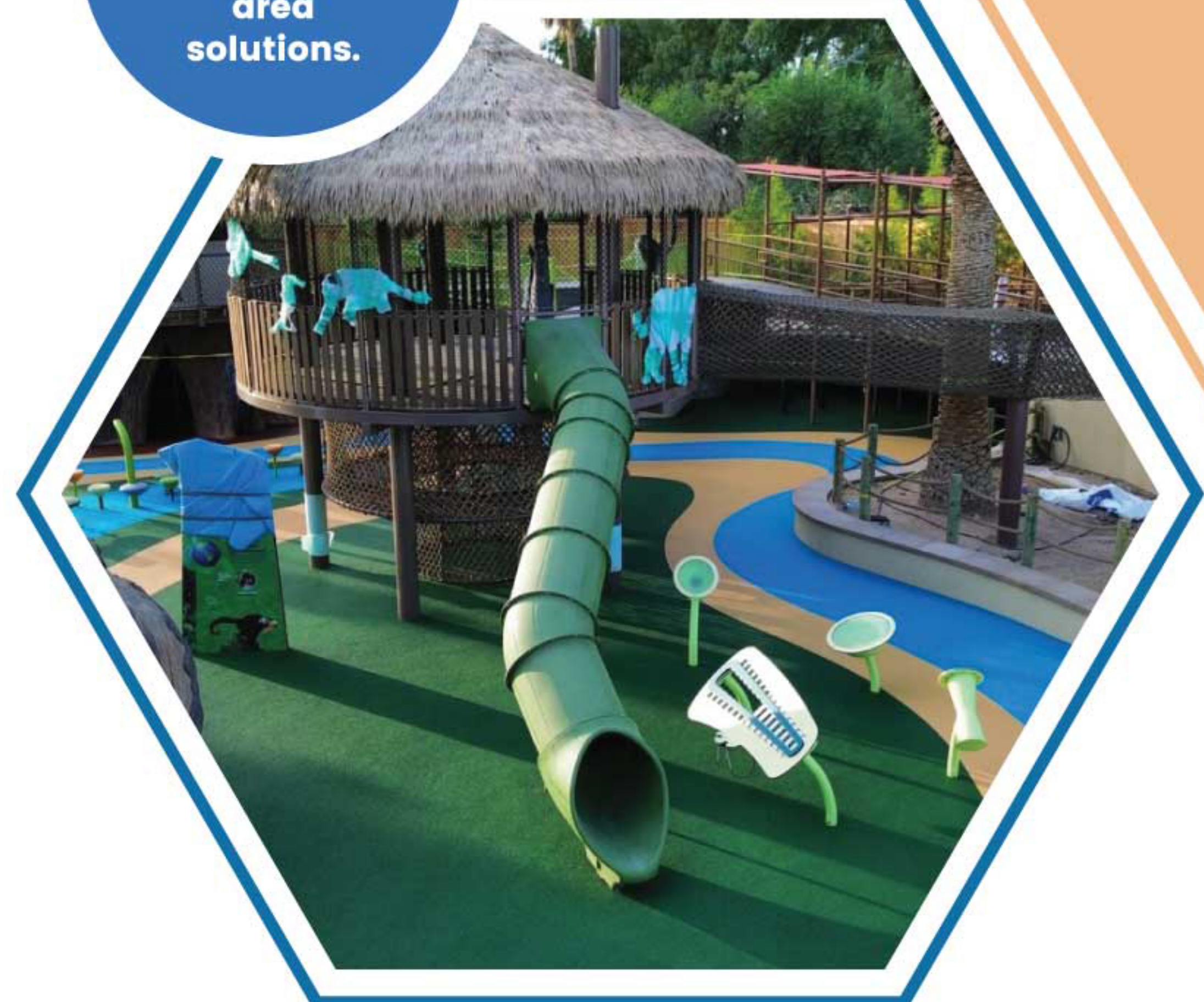
EnduraFlex is a superior poured-in-place rubber surface. It consists of two layers: a cushioned base and a surface layer of TPV granules (each granule being 1-4 mm). TPV is a vulcanized product, making it better equipped to withstand daily wear and tear and color fading from consistent UV exposure.

- Standard aromatic or premium aliphatic urethane available
- Mixed and applied on site
- Higher UV resistance
- ASTM compliant for fall & accessibility
- IPEMA certified

### Standard Colors



See Xtreme Surfacing on page 8 for high-use area solutions.





# Playground Surfacing

## FlexGround Standard-EPDM

### Highest Quality Industry Standard:

FlexGround Standard is our traditional poured-in-place rubber safety surfacing. It is a two-layer system consisting of a high-quality recycled cushion layer base and a top layer made of 1/2" urethane-adhered EPDM rubber granules. Each granule size is 1-3mm in size.

- Dual layer system of cushion and colored layer
- Aromatic or aliphatic urethane available
- Mixed and applied on site
- ASTM compliant for fall and accessibility
- IPEMA certified

### Standard Colors



A wider rainbow array of colors is available upon request and may require a premium up-charge. Please check with a representative for availability in your area. Colors are representative of actual rubber. Note that colors may appear slightly different in print. For actual color review, please request samples.



## FlexGrass

### High-Quality Synthetic Turf

FlexGrass is an IPEMA certified synthetic turf and poured-in-place rubber safety surfacing system. It utilizes the same cushion-based sublayer as our rubber top systems. The top, or "wear" layer is a high quality synthetic turf.

### About Our Product

FlexGrass uses an infill which can create, on average, a surface up to 30 degrees cooler than systems utilizing loose rubber infill. It is fall height certified for ASTM compliance and meets guidelines established by the Americans with Disabilities Act (ADA) and Consumer Product Safety Commission (CPSC).

### Why Choose FlexGrass?

- Completely porous and dries quickly after wet weather
- Non-SBR infill





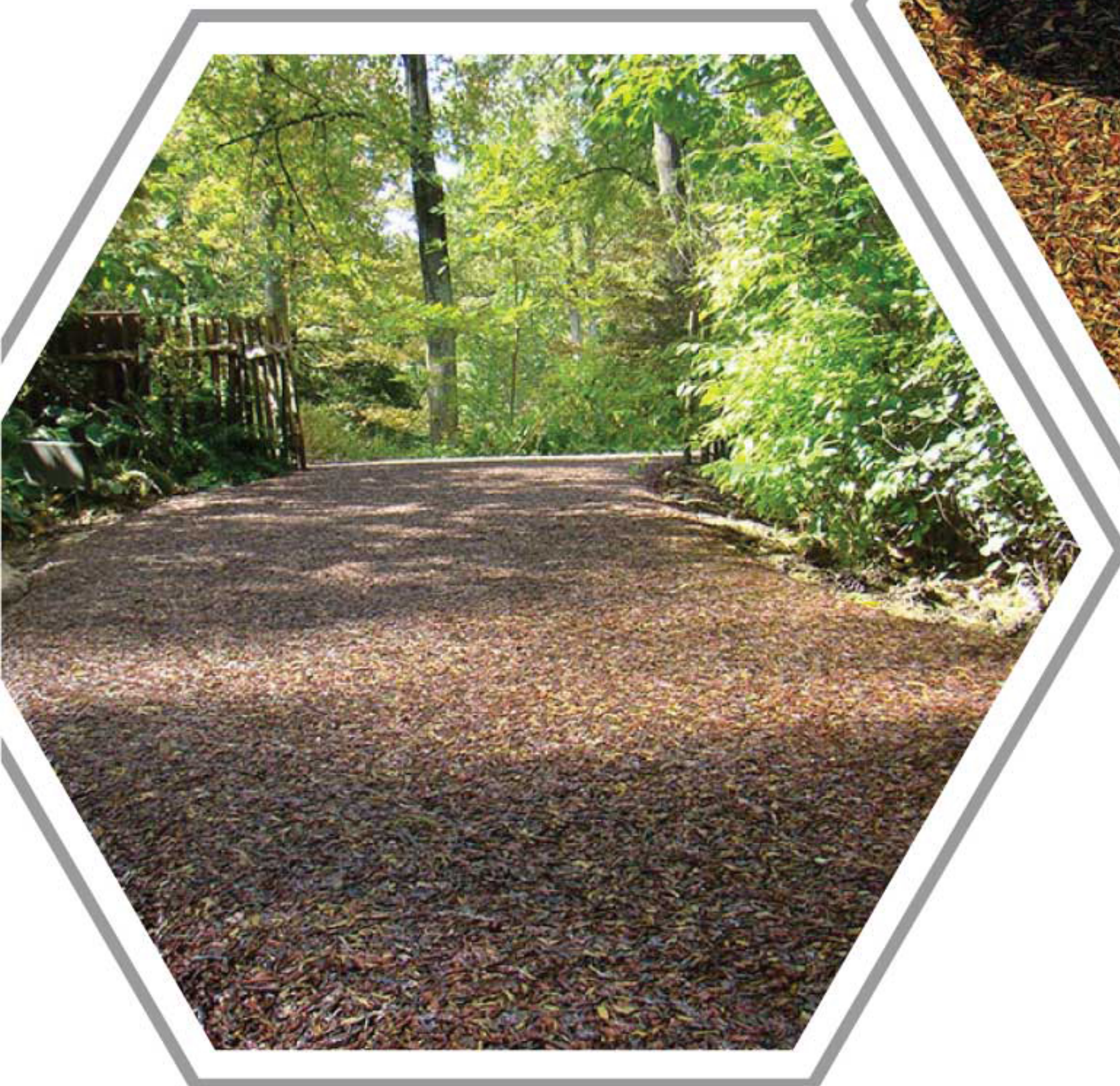
# Playground Surfacing

## FlexBond

### Bonded Rubber Playground Surfacing

FlexBond is a single layer unitary system surfacing system for playgrounds, walking trails and landscapes. This bonded rubber system provides a more natural look when compared to traditional unitary surfacing systems.

- 100% color coated recycled rubber
- Mixed and applied on site
- ASTM compliant for fall and accessibility
- IPEMA certified





## High Wear Area Protection

### UltraFlex Inserts

Installation of smaller granule TPV under high-traffic areas to protect from early wear.

- Great alternative for swing bays & slide exits
- Works great with Standard & EnduraFlex systems

### Xtreme Surfacing

Xtreme Surfacing is an application on the surface that provides a painted look. FlexGrout and ColorSeal coatings are applied to protect highly used areas for new surface installations.

- Ultimate protection against early wear
- Perfect for swing bays and slide exits
- Impervious to fading, chipping, peeling, delamination and granulation
- Can be installed with EnduraFlex or Standard systems

## High Wear Areas Solutions

### FlexGrout

FlexGrout is a proprietary medium viscosity grout designed to penetrate and fill voids between rubber granules on playground pads. Its precise formulation ensures integral bonding and color-based revitalization, maintaining slip/skid resistance with the exposed original rubber granules. Available in standard and custom colors, FlexGrout extends the life of existing rubber surfacing and, when applied to new installations, is known as Xtreme Surfacing. Proven to enhance compliance with industry codes, including ASTM 1292 Head Impact Criteria and skid/flammability mandates. Elevate playground aesthetics and safety with FlexGrout.

### ColorSeal

ColorSeal is a color-based top dressing designed to reinvigorate the look and color of pads after they have been grouted with FlexGrout.





# Recreational Surfacing

## FlexGround FlexTrail

FlexGround's innovative trail system combines the flexibility of poured-in-place rubber surfacing with the durability of a bonded stone surface. The result is a highly aesthetic, wear-resistant surface engineered for use in high-traffic areas. FlexTrail is perfect for walking trails, bikepaths, elevated decking, patios, livable rooftops, golf cart paths, and student pick-up areas.

- Unique combination of bonded stone and rubber
- Highly aesthetic and wear resistant
- Engineered for use in high traffic areas



FlexTrail Standard

Pea Gravel

100% Black SBR Rubber

No Colored Rubber

FlexTrail Plus

Pea Gravel

50% Black SBR Rubber

50% Color Coated SBR Rubber

FlexTrail Ultra

Pea Gravel

50% Black SBR Rubber

50% TPV or EPDM Rubber

Standard colors available.



## CourtScapes™

### Innovative Court Resurfacing

Transform your tennis, basketball or other athletic court into a dynamic and firm multi-use space for a fraction of the cost! CourtScapes is an innovative solution that can be installed directly over existing damaged asphalt or concrete courts. This custom mixed surface system is designable.

- Slip resistant
- Firm yet flexible
- Porous for quicker drying and less puddling
- Available in 4 standard color options
- Great for basketball, pickleball, tennis, and multi-use courts



### CourtScapes colors





# Recreational Surfacing

## SportFlex

### Athletic Court Surfacing

The ultimate solution for reviving athletic courts! Say goodbye to cracks with our strong cement compound. We smooth out rough surfaces using an acrylic-based emulsion resurfacer. The court is then coated with a durable, sand-textured emulsion, ensuring consistent play speed. SportFlex works on both Traditional Hard Courts and Cushion Courts. Plus, SportFlex has ITF Pace Certification.



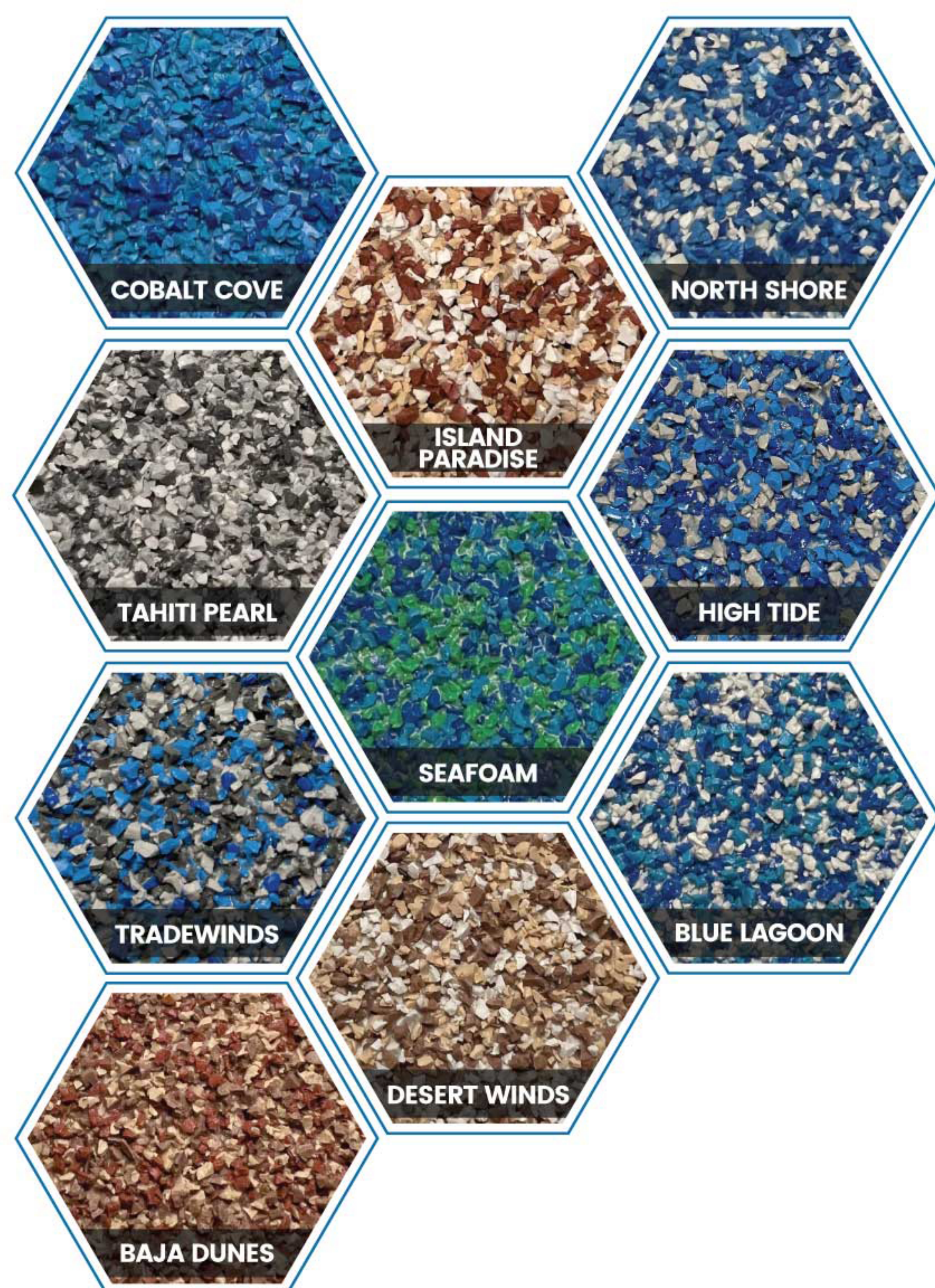


## Splash Pad Systems

### PolySplash

PolySplash from FlexGround is an aquatic surface innovation that provides a slip-resistant surface for play and splash pad activity. PolySplash is the most durable, chlorine-resistant, and UV stable surfacing on the market.

## Custom Colors



*Colors may vary slightly from those pictured*





# Aquatic Surfacing

## Splash Pad Systems

### Xtreme Water Play Surfacing

FlexGround's Xtreme Water Play line has been formulated to meet strict water play compliance standards mandated by the Department of Health. Our Xtreme Water Play surfacing uses only the highest quality, anti-microbial materials and is non-porous from top to bottom.

- Utilizes our proprietary grout system
- 100% colored TPV granules
- Withstands high chlorination, alkaline & UV
- Skid resistant

## Color Options



*Colors may vary slightly from those pictured. Colors are made to match our TPV color offerings.*





## Aquatic Decking Systems

### FlexGround KoolFlex

KoolFlex is a revolutionary pool and aquatic deck surface

This unique innovation was engineered to serve as the ultimate solution for any surfacing which requires the strength necessary to withstand areas of high chlorination, alkaline and UV exposure.

This system is comprised of a 3/8" troweled rubber overlay, grouted with our proprietary FlexGrout and finished with a final aesthetic layer of Color Seal. This is a non-porous system.

- Utilizes our proprietary grout system
- 100% coated black rubber granules
- Withstands high chlorination, alkaline & UV
- Anti-microbial and non-porous
- Skid resistant

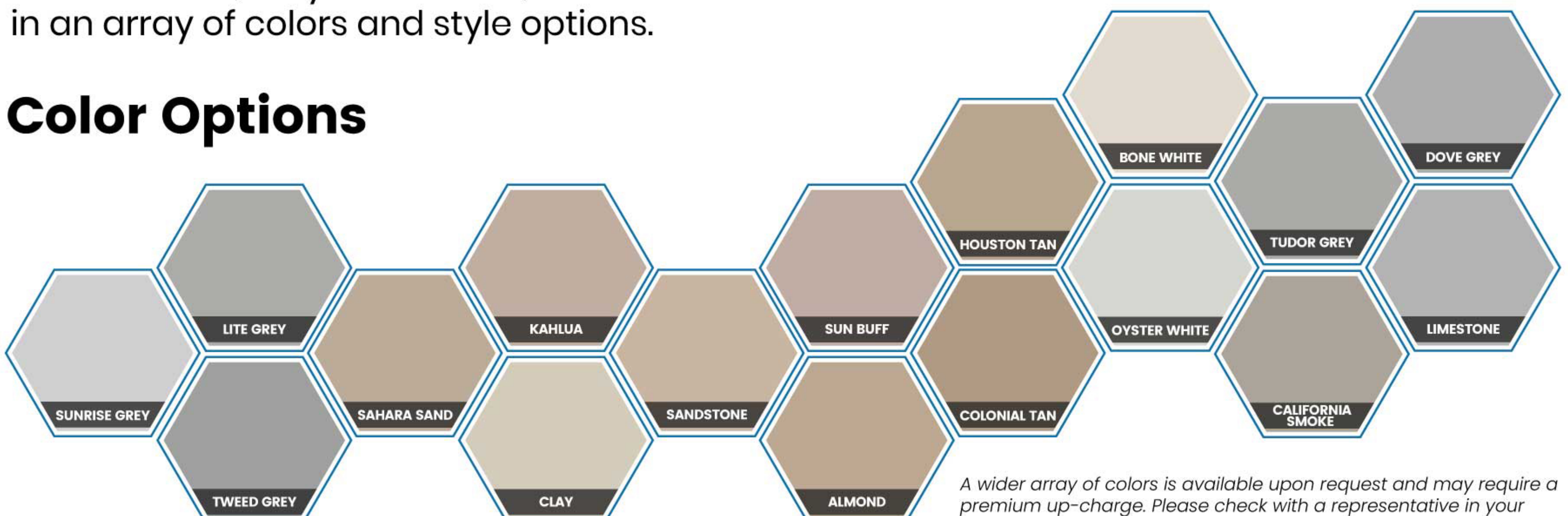


### Acrylic Pool Deck:

FlexGround uses only the highest quality materials in order to provide our clients with a beautiful pool deck meant to stand the test of time.

Our standard pool decking systems are cementitious, acrylic in nature, and are offered in an array of colors and style options.

## Color Options



A wider array of colors is available upon request and may require a premium up-charge. Please check with a representative in your area for availability. Note that colors may appear slightly different in print. For actual color review, please request samples.



# Surface Repair & Maintenance

## REFRESH

**FlexCoat**, a urethane top dressing, rejuvenates rubber safety surfaces by rebinding rubber granules, improving longevity and refreshing colors. Recommended every two years for preventative maintenance, it's best applied after pressure washing and power blowing the surface.



## REPAIR

**FlexGrout**, a newly engineered grouting compound, repairs and strengthens rubberized surfacing systems, tested to endure extreme conditions. Ideal for high-wear areas like underneath swings or slide exits, FlexGrout ensures durability and hassle-free maintenance.

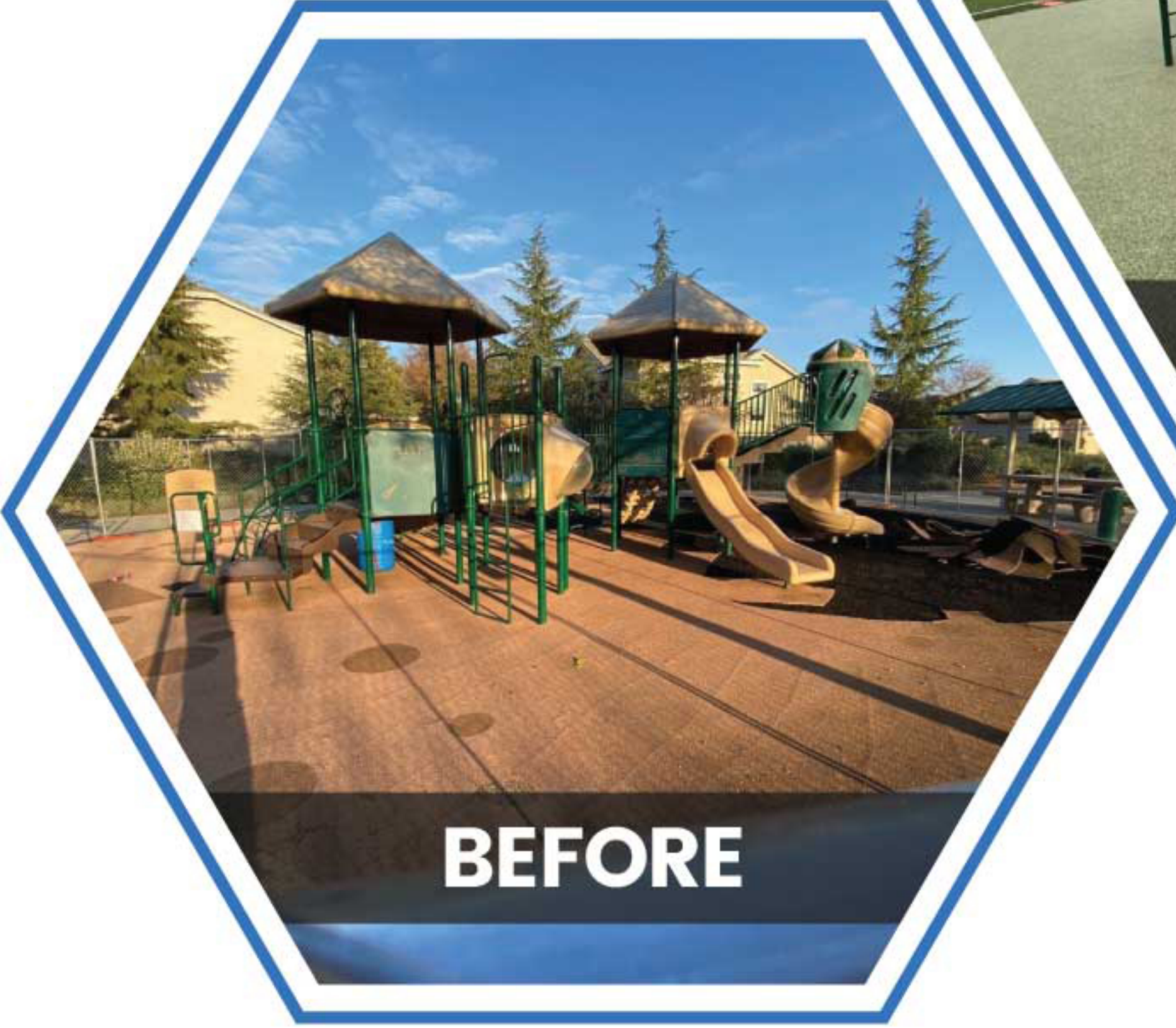
**FlexFix** Finding holes in your previously applied rubber surface? FlexGround can quickly and easily repair minor and major damage. Small repairs can be made in various designs and colors in order to create the appearance that the repaired area was part of the original design.





RETOP

**FlexTop** is the solution for widespread and severely damaged rubber. It consists of reapplying the EPDM or TPV top surface (and cushioning where needed). FlexTop can be applied as 1.5" over existing wear layer, or can be accomplished by removing the existing color layer, freshening the cushion and then installing a new 1/2" color wear layer. Either method works to conceal any age and maintain or improve critical fall.





# Who is FlexGround?

## FlexGround is a leading provider of revolutionary playground and safety surfacing innovations

Committed to quality, safety, and creativity, we specialize in installing customizable surfaces that turn play areas into vibrant spaces. Our experienced team collaborates closely with schools, parks, and playground owners to craft durable and visually appealing recreational surfaces.

FlexGround installs surfaces that are tested to meet industry safety standards.









# Now Installing **NATIONWIDE**



INTERNATIONAL  
PLAY EQUIPMENT  
MANUFACTURERS  
ASSOCIATION

Scan the code to visit  
our licensing information page.

